



MORPHEX

Hybrid Analog Synth & Effect Unit

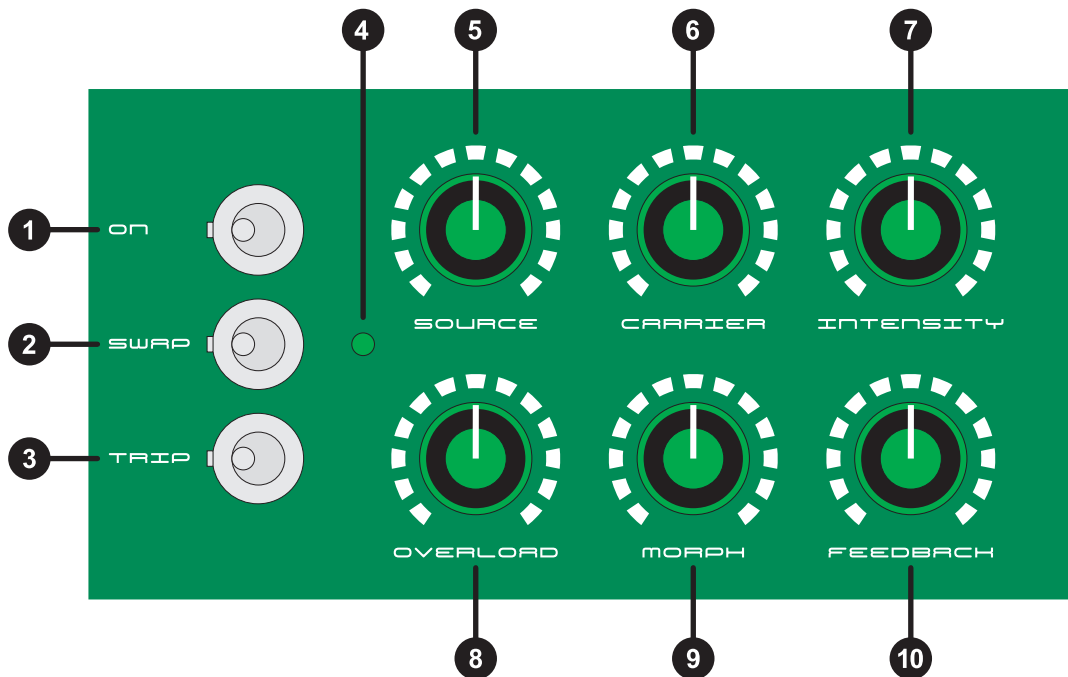


User Guide



MORPHEX

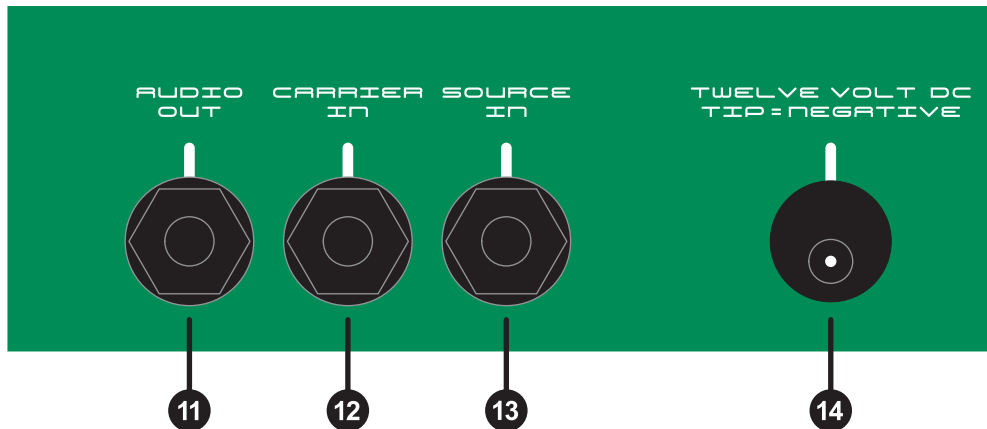
Hybrid Analog Synth & Effect Unit



- 1 ON:** Left: Power On
Right: Power Off
- 2 SWAP:** Left: *SOURCE IN* = Main Audio Signal / *CARRIER IN* = Modulation Audio Signal
Right: *SOURCE IN* = Modulation Audio Signal / *CARRIER IN* = Main Audio Signal
- 3 TRIP:** Left (if *SWAP* = Left): *SOURCE IN* = Main Audio Signal / *CARRIER IN* = Modulation Audio signal
Left (if *SWAP* = Right): *SOURCE IN* = Modulation Audio Signal / *CARRIER IN* = Main Audio Signal
Right (if *SWAP* = Left): *SOURCE IN* = Main Audio Signal and Modulation Audio Signal
Right (if *SWAP* = Right): *CARRIER IN* = Main Audio Signal and Modulation Audio Signal
- 4 LED:** Power On indicator
- 5 SOURCE:** Sets the amount of *SOURCE IN* (Main Audio Signal) sent to *AUDIO OUT*
This control operates in conjunction with the *SWAP* and *TRIP* switches
- 6 CARRIER:** Sets the amount of *CARRIER IN* (Modulation Audio Signal) sent to *AUDIO OUT*
This control operates in conjunction with the *SWAP* and *TRIP* switches
- 7 INTENSITY:** Sets the amount of Effected Audio Signal sent to *AUDIO OUT*
- 8 OVERLOAD:** Sets the amount of Main Audio Signal to send to *FEEDBACK*
- 9 MORPH:** Sets the amount of Modulation Audio Signal to send to *FEEDBACK*
- 10 FEEDBACK:** Sets the amount of Modulation applied to the Main Audio Signal
This control can also be used to force Morpheus into self-oscillation



Hybrid Analog Synth & Effect Unit



- 11 AUDIO OUT:** Main Audio Output: 6.5mm (1/4") Mono Socket
- 12 CARRIER IN:** Modulation Audio Signal Input
Line-Level Audio Signal
6.5mm (1/4") Mono Socket
- 13 SOURCE IN:** Main Audio Signal Input
Line-Level Audio Signal
6.5mm (1/4") Mono Socket
- 14 *POWER IN:** 12 Volt DC @ approx. 300mA
2.1mm Socket
Tip = Negative

Using the wrong adapter can cause damage to your instrument.

Please make sure you are using a good quality, balanced adapter with an Earth plug set to the correct Voltage and Polarity.

Please also conserve energy and resources by powering down and unplugging Morphex when it is not in use.

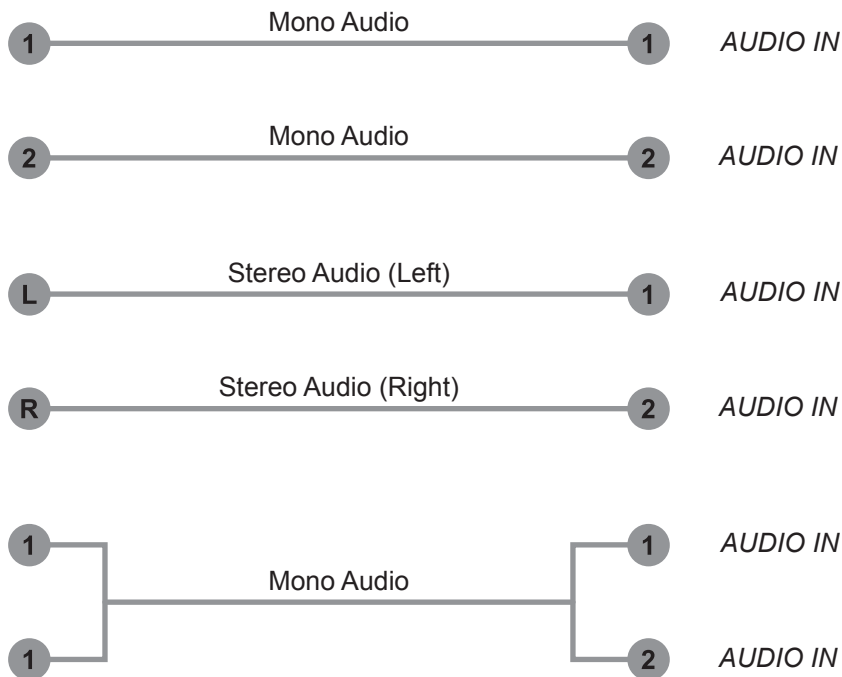
***Power adapter not included**

SPECIFICATIONS: Dimensions (mm): (W) 132 x (H) 68 x (D) 77
Weight (kg): 0.45
Case Construction: 0.9mm Mild Steel (CR4)

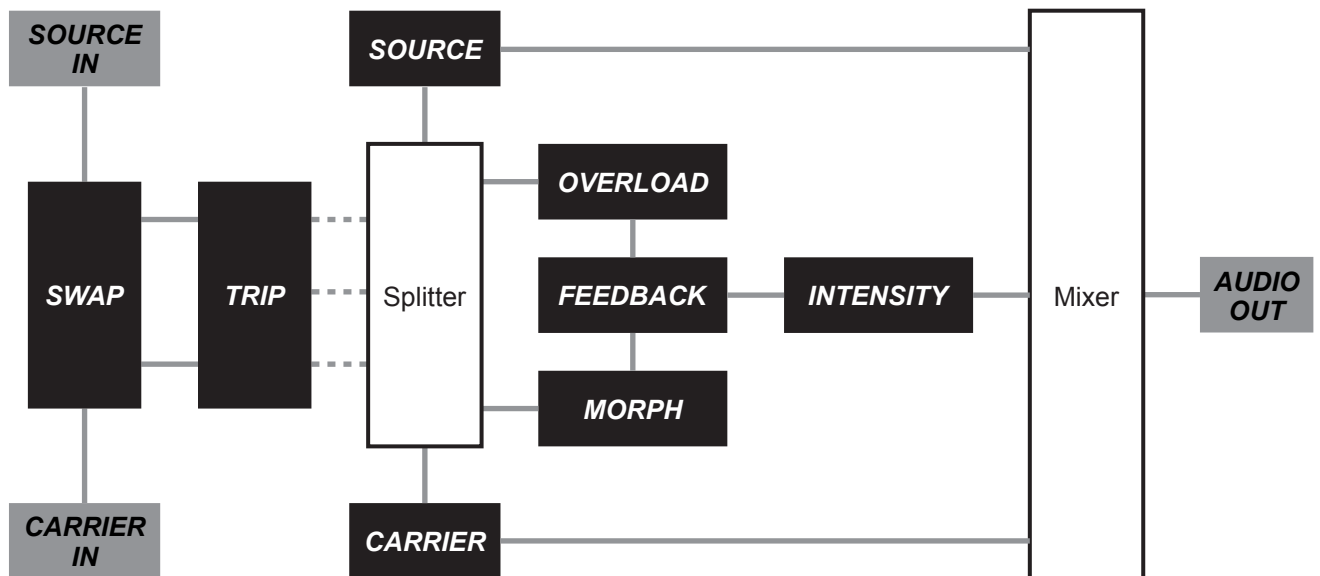


Hybrid Analog Synth & Effect Unit

1 AUDIO INPUT OPTIONS:



2 SIGNAL PATH:





MORPHEX

Hybrid Analog Synth & Effect Unit

1 MORPHEX SETTINGS: *Print or photocopy this sheet to record the settings of your favourite sounds.*

Description:

SOURCE IN:

CARRIER IN:

ON	<input type="checkbox"/>			
		SOURCE	CARRIER	INTENSITY
SWAP	<input type="checkbox"/>			
TRIP	<input type="checkbox"/>			
		OVERLOAD	MORPH	FEEDBACK

Description:

SOURCE IN:

CARRIER IN:

ON	<input type="checkbox"/>			
		SOURCE	CARRIER	INTENSITY
SWAP	<input type="checkbox"/>			
TRIP	<input type="checkbox"/>			
		OVERLOAD	MORPH	FEEDBACK

Description:

SOURCE IN:

CARRIER IN:

ON	<input type="checkbox"/>			
		SOURCE	CARRIER	INTENSITY
SWAP	<input type="checkbox"/>			
TRIP	<input type="checkbox"/>			
		OVERLOAD	MORPH	FEEDBACK